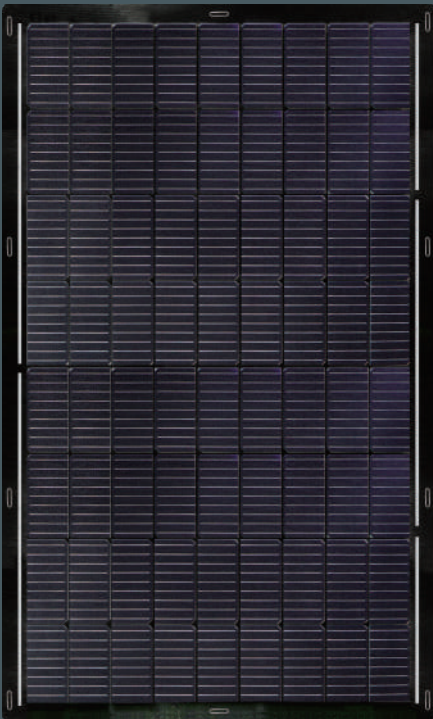


200 Watt

72 Half Cell Monocrystalline Module

SUNO-U200F-8x09DB-e



Ultra-light: Glass free module weighs 2.9 kg, 70% lighter than conventional glass modules.



Aesthetic: Seamless integration with underlying installation surface.



Durable: SUNO UL is the first glassless module to pass the same durability tests as conventional glass modules, including IEC 61215:2016, IEC61730:2016 and UL61730 (USA). SUNO UL has also passed PID, salt mist and ammonia corrosion tests.

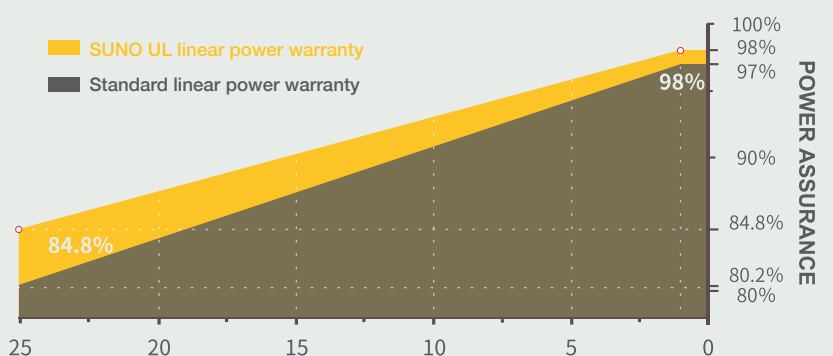
POWER OUTPUT RANGE 200 W

POWER TOLERANCE 0-5 W

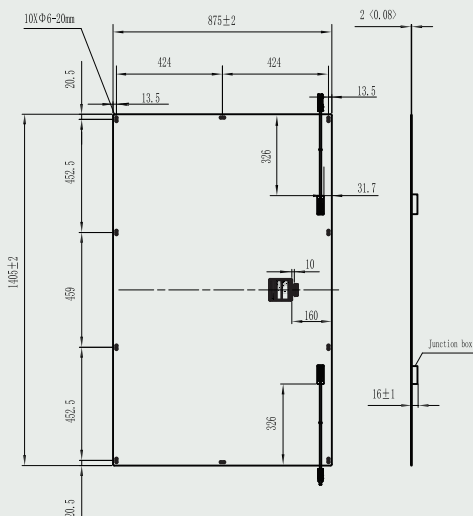
LINEAR PERFORMANCE WARRANTY

CAUTION: Read installation manual before using the product.
TSOE 2020, S.L. Add: Julio Cesar, 3 41001 Seville (Spain). All rights reserved.
Specifications included in this datasheet are subject to change without notice.

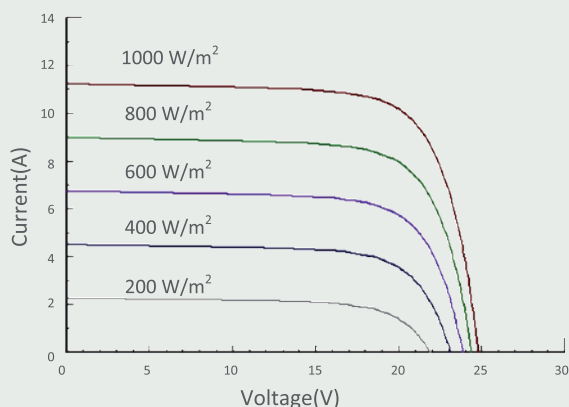
5 Year Product Warranty



DIMENSIONS



I-V CURVE (200)



TEMPERATURE CHARACTERISTICS

Nominal Module Operating Temperature(NMOT) **41±2 °C**

Temperature Coefficient of P_{max} **-0.34 %/°C**

Temperature Coefficient of V_{oc} **-0.26 %/°C**

Temperature Coefficient of I_{sc} **0.033 %/°C**



Dealer information

SUNO-U200F-8x09DB-e

ELECTRICAL CHARACTERISTICS

STC **SUNO-U200F-8x09DB-e**

Maximum Power (P _{max})	200
Maximum Power Voltage (V _{mp})	21.2
Maximum Power Current (I _{mp})	10.71
Open-circuit Voltage (V _{oc})	24.8
Short-circuit Current (I _{sc})	11.23
Module Efficiency (%)	16.2
Operating Temperature	-40 °C to 85 °C
Maximum System Voltage	1500 V DC (IEC)
Maximum Series Fuse Rating	25 A
Application Class	Class A
Power Tolerance	0/+5 W

STC: Irradiance 1000W/m², Cell Temperature 25 °C, AM=1.5.

Tolerances of P_{max}, V_{oc} and I_{sc} are within ±5%

NMOT **SUNO-U200F-8x09DB-e**

Maximum Power (P _{max})	162.3
Maximum Power Voltage (V _{mp})	20.2
Maximum Power Current (I _{mp})	8.04
Open-circuit Voltage (V _{oc})	24.7
Short-circuit Current (I _{sc})	8.98

NMOT: Irradiance 800W/m², Ambient temperature 20 °C, AM=1.5, Wind speed 1 m/s.

MECHANICAL CHARACTERISTICS

Solar Cell	Monocrystalline silicon(166mm half cell)
No. of Cells	72 (8×9)
Module Dimensions	1405×875×2 mm
Weight	2.9kg
Backsheet	cell side Black
Frame	Frameless
J-box	IP 68 rated
Output Cables	Photovoltaic technology cable 4.0 mm 2, (+)450 / (-)450 mm
Connector	MC4 compatible

PACKAGING CONFIGURATION

	20' GP	40' HC
Module per pallet	/	66
Pieces per container	/	1848